

ROADKING[®]

RKING950

PREMIUM NOISE-CANCELING

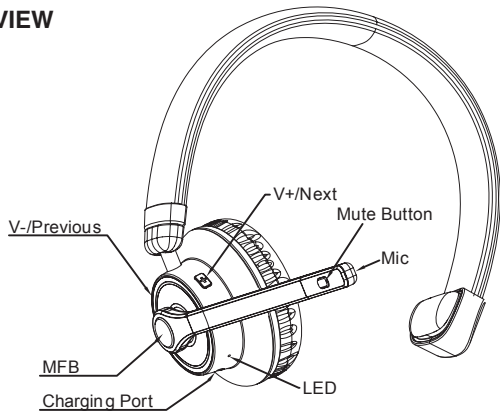
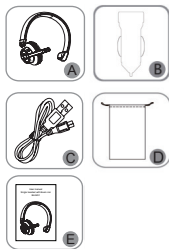
BLUETOOTH[®] HEADSET

CASQUE D'ÉCOUTE **BLUETOOTH**[®] ANTIBRUIT
DE PREMIÈRE QUALITÉ

Owner's Guide

RKING950

1 | PRODUCT OVERVIEW



Packing list:

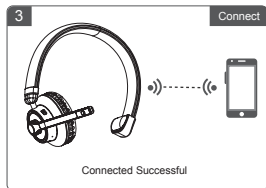
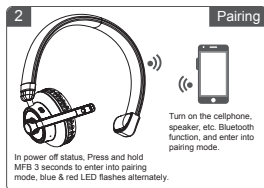
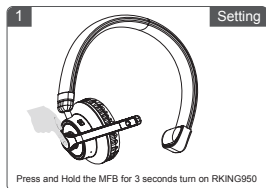
- A. RKING950 Bluetooth Headset 1 pcs
- B. Car Charger 1 pcs
- C. Micro USB Charging Cable 1 pcs
- D. Bag 1 pcs
- E. Manual 1 pcs

2 | PRIMARY OPERATION

Button	Function	Primary operation
Multi-Function Button (MFB)	Power on/off	Press and Hold the MFB for 3 seconds turn on/off RKING950.
	Pairing model	In off status, press and hold MFB for 6 seconds until red and blue LED flash alternatively.
	Play/Pause music	In playing the music, short press the MFB to play/pause the music.
	Phone function	Incoming call, short press MFB to answer/end the call; press and hold the MFB to reject the call.
Volume up/down	While on a call or playing music, short press volume up/down button, it will increase or decrease volume when playing music or on a phone call.	
Up/Down music	In playing music, press and hold the "+" or "-" to switch up/down music.	
Last Number Redial	In standby status, press MFB twice.	
Voice dialing	Short Press and hold MFB button 2 seconds	
Sound switch	While on a call, Press and hold MFB button.	
Mute button	While on a call, short press the mute button until you hear a prompt; your mic will then be muted. Press the mute button again and your mic will be live.	

3 | BLUETOOTH PAIRING AND CONNECT

- In power off status, Press and hold Multi-function button 3 secons to enter into pairing mode, blue and red LED flashes alternately.
- Turn on the phone's Bluetooth function, search "RKING950" Bluetooth device, click "RKING950" to connect. After pairing successful, LED light turns to Blue and flashes once for three seconds, you can now listen to music and have phone function via the headset.



4

3.1 | ONE PAIRING TWO DEVICES

- After pairing the first device, turn off the first connected device's Bluetooth function temporarily.
- Press and hold MFB to turn off RKING950. Then press and hold MFB 6 seconds to enter into pairing mode blue and red LED flashes alternately.
- Open the second phone's Bluetooth function, search "RKING950" Bluetooth device, click "RKING950" to connect. After pairing connection successful, LED indicator light turns to blue, and flashes slowly.
- Turn on the first phones' Bluetooth function, found in the history of "RKING950" click and connect. (some phones will automatic connect).

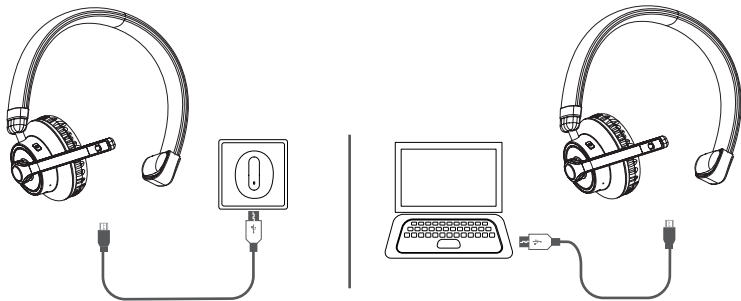


5

4 | CHARGING

When the red light flashes, charge immediately, it will need approximately three hours to charge. When the red LED light goes out, the battery is fully charged.

Use a standard USB charging cable to charge RKING950. When not in use for some time, periodically charge RKING950 once every two months.



6

5 | LED INDICATOR

Status	LED displayed
Power on	Blue LED flashes 3 times
Power off	Red LED flashes 3 times
Pairing status	Red and blue LED flash alternately
Unconnected standby status	Blue LED flashes twice every 5 seconds
Connected standby status	Blue LED flashes once every 10 seconds
Playing music status	Blue LED flashes once every 10 seconds
Call status	Blue LED flashes once every 10 seconds
Low voltage	Red LED flashes
Charging	Solid Red
Fully Charged	Red LED turn off

7

6 | SPECIFICATIONS

BLUETOOTH Specifications:	v5.0, Class II
Chip Solution:	CSR BC8615
Operation Frequency:	2.402-2.48GHz
Standby Time:	About 600 hours
Talk Time:	About 40 hours
Charge Time:	About 3 hours
Multi-point connection:	Support (connect two phones)
Supported Profile:	A2DP1.2, AVRCP1.0, HFP 1.6, HSP 1.2
Passcode for Bluetooth pairing:	0000, 1111, 1234, 8888
Battery Type:	400mAh rechargeable lithium battery
Charging Supply:	5.0V DC and 110-240V AC Adapter, ≥ 500MA
Operating Temp:	-10 to 55°C
Weight:	About 135g
Overall dimensions:	387 mm x 191.25 mm x 419.175 mm

7 | NOTES AND QUESTIONS

- A. Power off automatically:** RKING950 will power off automatically when there is no Bluetooth connection over a 10-minute time period.
- B. Re-Connection:** When RKING50 headset connects to Bluetooth successfully, it will auto connect next time in use. If for some reason the unit does not auto connect, try re-pairing the headset.
- C. How to Re-Set Paired Devices:** In any status, press and hold the “MFB” and mute button at the same time.
- D. Pairing Passcode:** Some devices require a passcode to pair, others do not. Should the device you wish to pair to the headset require a passcode try the following: 0000, 8888, 1111, or 1234.
- E. What is the Charging Voltage and Current:** DC 5 voltage/500mAh. A DC, AC or USB port should be able to charge the RKING950

8 | SAFETY AND GENERAL INFORMATION

1. Please read this User Manual carefully and follow all instructions.
2. To avoid any damage or malfunction of the device, do not drop the device from high places.
3. Keep device away from humidity, water and any other liquid. If the device is exposed to water, moisture or other liquids, do not operate it to avoid any electrical shock, explosion and damage to the device or yourself.
4. Do not place or keep this device near any heat source, such as direct sunlight, radiators, stoves or other apparatus that produces heat. This may cause an explosion, degrade the performance and/or reduce battery life.
5. Do not modify, repair or disassemble device (especially the battery). Doing this will void the warranty.
6. Do not place heavy objects on the device.
7. Use only the supplied and approved chargers.
8. Please contact RoadKing for replacement or support of this product.
9. Unplug this device when unused for long periods of time or during lightning storms.
10. The battery used in this device may present a risk of fire or chemical burn if mishandled.

14 | FCC & IC STATEMENT

Operation is subject to the following two conditions:

1. This device may not cause harmful interference.
2. This device must accept any interference received, including interference that may cause undesired operation.

NOTE: The manufacturer is not responsible for ANY interference, for example RADIO or TV interference, caused by unauthorized modifications to this equipment. Such modifications could void the user's authority to operate the equipment.

15 | WARRANTY

This 1 Year Limited Warranty from RoadKing, a DAS Company applies to all electronic products and devices manufactured by RoadKing and sold under the brand name RoadKing. Visit www.roadkingproducts.com for warranty details.

Terms of the Warranty: RoadKing warrants that the product you have purchased from a DAS authorized retailer is free from defects in materials and workmanship under normal use during the warranty period (1 year). The warranty period begins on the day of retail sale. This warranty extends only to the original purchaser. It is not transferrable to anyone who subsequently receives the product. It excludes all expendable parts (fuses, filters,

bulbs, etc.) During the warranty period RoadKing will repair your defective product, replace it with an identical item, or at our option exchange it for an equivalent product of value and performance. This Limited Warranty does not extend to any product that has been damaged or rendered defective as a result of: an accident, misuse or abuse, as a result of an act of God, by operation outside the usage parameters stated in this manual, by modification of the product, attempted repair, or as a result of war or terrorist attack. Other limitations of this warranty exclude: payment for your lost time, loss of use of your product, or property damage caused by the product or its failure to work, or any other incidental or consequential damages including personal injury. Except as expressly set forth in this warranty statement, RoadKing makes no other warranties expressed or implied.

Defective products must be returned to the dealer within 30 days. After 30 days, the product may be returned to RoadKing.

When returning products to RoadKing: Shipping to RoadKing shall be prepaid; your replacement will be mailed back to you at no additional charge. Carefully pack product and all included accessories into a suitable box, along with original dated register receipt or invoice, a letter stating the defect, daytime phone number, and a physical address. (UPS will not deliver to a PO Box.)

- Any package with a PO Box address will not be processed, and will be held until

further notification from you.

- Make sure you can track your shipment to us. RoadKing will not be responsible for lost packages.
- RoadKing will not be responsible for damage incurred during shipment to us.
- Failure to provide a dated proof of purchase will invalidate warranty.

Ship to: RoadKing Returns, 48 Industrial Road, Elizabethtown, PA 17022

For customer assistance and technical support call 1-866-622-7979 Monday through Friday 8:00am to 5:00pm Eastern Time. Or write to : support@dasinc.com

RoadKing® and RoadPro® are registered trademarks of DAS Companies, Inc. The BLUETOOTH® word mark and logos are registered trademarks owned by Bluetooth SIG, Inc. and any use of such marks by DAS Companies, Inc. is under license. All other trademarks registered trademarks, copyrights and logos are the property of their respective owners. ©2018 DAS Companies, Inc. and/or affiliates.